

# The WTA Platform.

Modern visibility to help you  
plan, manage and optimise your  
supply chain.

Logistics doesn't have to be a maze.

# Leading Supply Chain Management

Our tool comes as standard for WTA customers and brings the management of all your freight into a modern, user-friendly interface. With a whole host of features which simplify processes and provide unbelievable insight.



**Quickly find** shipments and their status.



A **single storage location** for all documentation.



**Analyse and optimise** your supply chain.



**Manage** orders, invoices and shipments.



**Transform** communication with stakeholders.



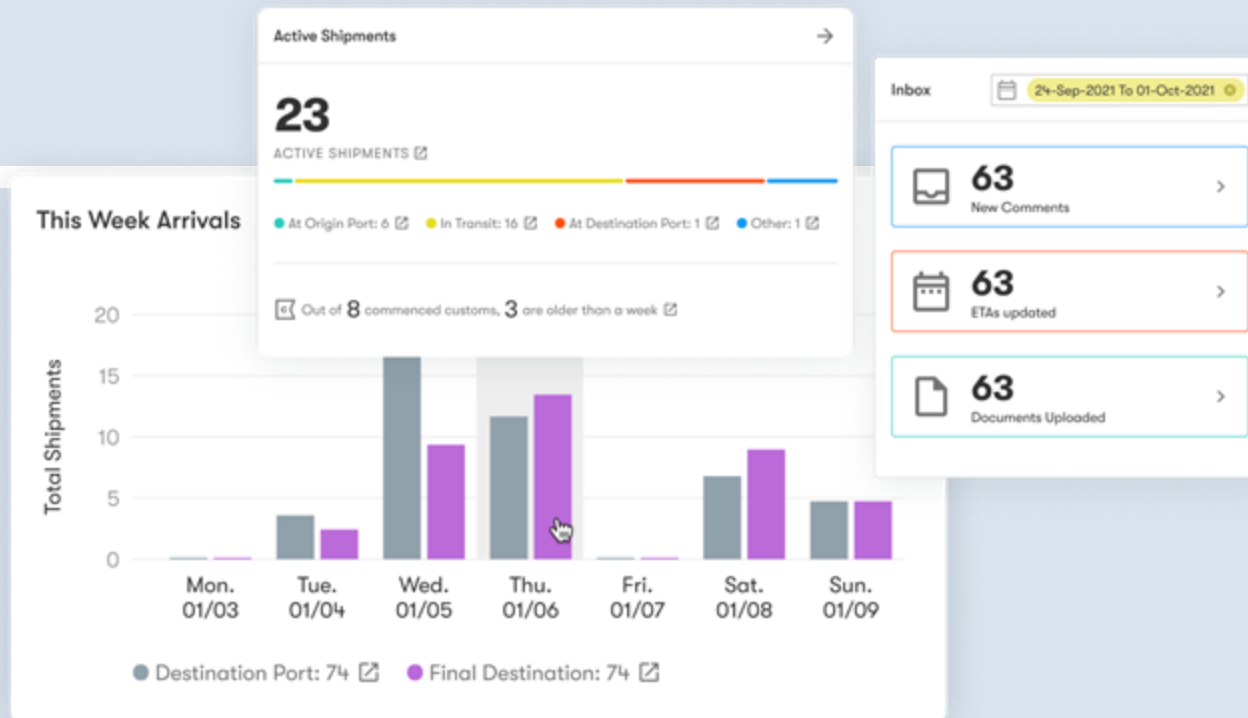
ISO compliant CO2 emission **tracking**



# Optimise Your Business

Say goodbye to spreadsheets. Save time, reduce manual operations and increase efficiency with our intuitive, easy to use digital platform.

No set-up required. Simply login to access your data. With a single, cloud-based online tool, you have access to all the information that you need related to your logistics.



# Order Visibility

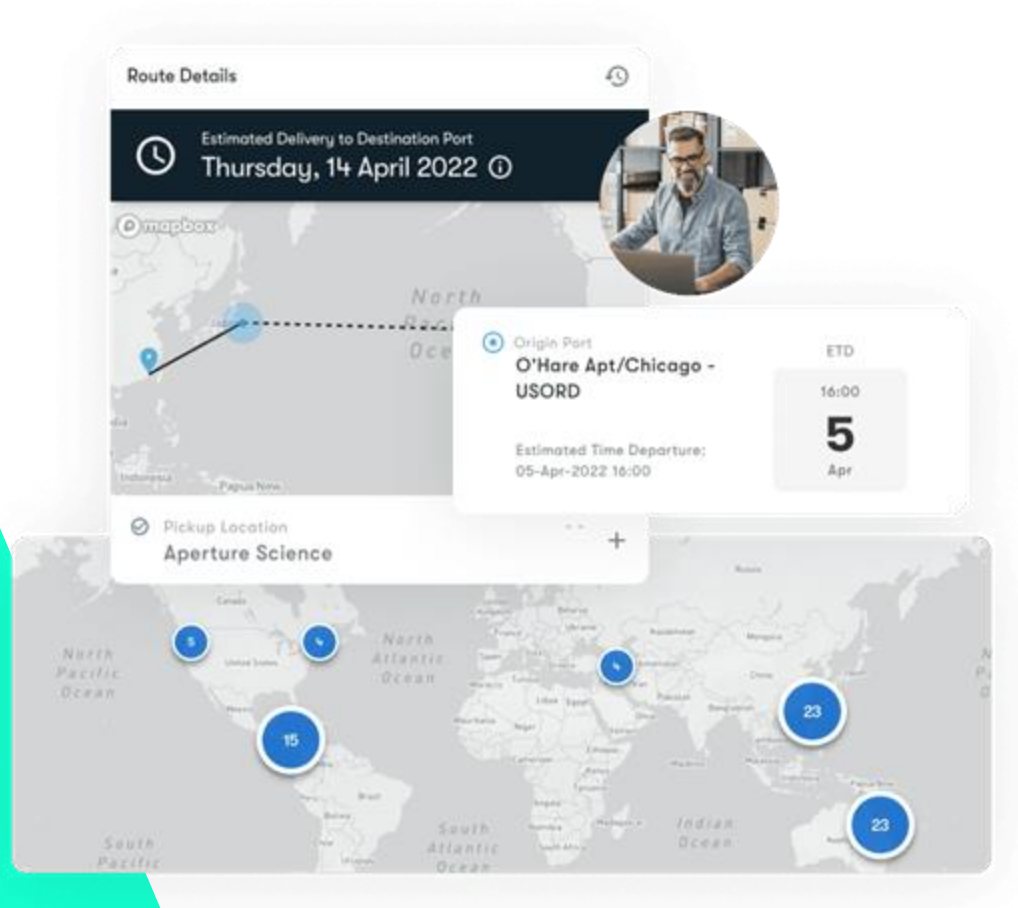
Simply better planning. Get real-time visibility into order milestones, ex-factory times, arrival times and more. Locate any information immediately with an advanced search function.

The search engine will scour your entire database to find a correlation with what you're typing. So, you can find shipments by looking for Shipment ID, Order ID, Container Number, Product Code, House Bill, Master Bill and more.

The dashboard displays the following information:

- Order Milestones:**
  - Ex Factory: 21-Jul-2021 12:37 On-time
  - Shipment Requested
  - Origing Receival at Wharf
  - Departure
  - Arrival
  - Clearance Commenced
  - Clearance Finalized
  - Unpacked
  - Estimated Pickup
- Map:** Shows a route from the United States to Colombia, with labels for Mexico and Cuba.
- Actual Delivery to Destination Port:** Friday, 06-Aug-2021
- In Transit**
- Expected Delivery:** ETA: 02-Apr-2020
- Planned Itinerary:**

Event	Time	Offset
Pickup	02-Aug-2021 14:38 UTC	+1 Day
Chandlers Puppy Parlor		
Departure	02-Aug-2021 14:38 UTC	on-time
Seattle - USSEA		
Leg 1 of 1	02-Aug-2021 14:38 UTC	+2 Days
SS Bananas		
Port Arrival	02-Aug-2021 14:38 UTC	+2 Days
Bogotá - COBOG		
Delivery	02-Aug-2021 14:38 UTC	on-time
Keijo Maria		
- Transport Mode:** Ocean
- Carrier:** - -
- Port of Loading:** Boston - USBOS
- Port of Discharge:** Buenaventura - COBUN



# Shipment Visibility Done Right

See everything you need to know about your live shipments, all in one place. Find departure and arrival times, manage notifications, documents, invoices, and more.

Use permission settings to limit staff access to sensitive information. Simple link generators allow you to share specific data points with buyers.



# Easier Exceptions Management

Managing disruptions has never been simpler.

Raise efficiency with a centralised view of exceptions, paired with custom in-app notifications, reminders and automated email alerts. Budget better with AI-powered unexpected charge forecasting.

1 Exception, 1 Reminder

ETD Origin Port missed

Your shipment did not depart the origin port on the ETD of 15-Sep-2022

Reminder to return empty container

To avoid detention fees, return the empty container {ID} by {Return Empty By}.

2 Exceptions

Planned Origin Port ETD missed

Your shipment did not depart the origin port on the ETD of 15-Sep-2022

Customs hold

Your shipment is in an active {import or export} customs hold by {agency name(s)}. Please see [Lines Report](#) for more information.

Reminders

New

☐ Reminder to pick up full container

☐ Reminder to return empty container

Exceptions

New

☐ Planned Origin Port ETA Missed

☐ Planned ETA Missed

☐ Customs Hold

☐ Container On Hold

☐ Container not delivered on time

☐ Full container not removed on time

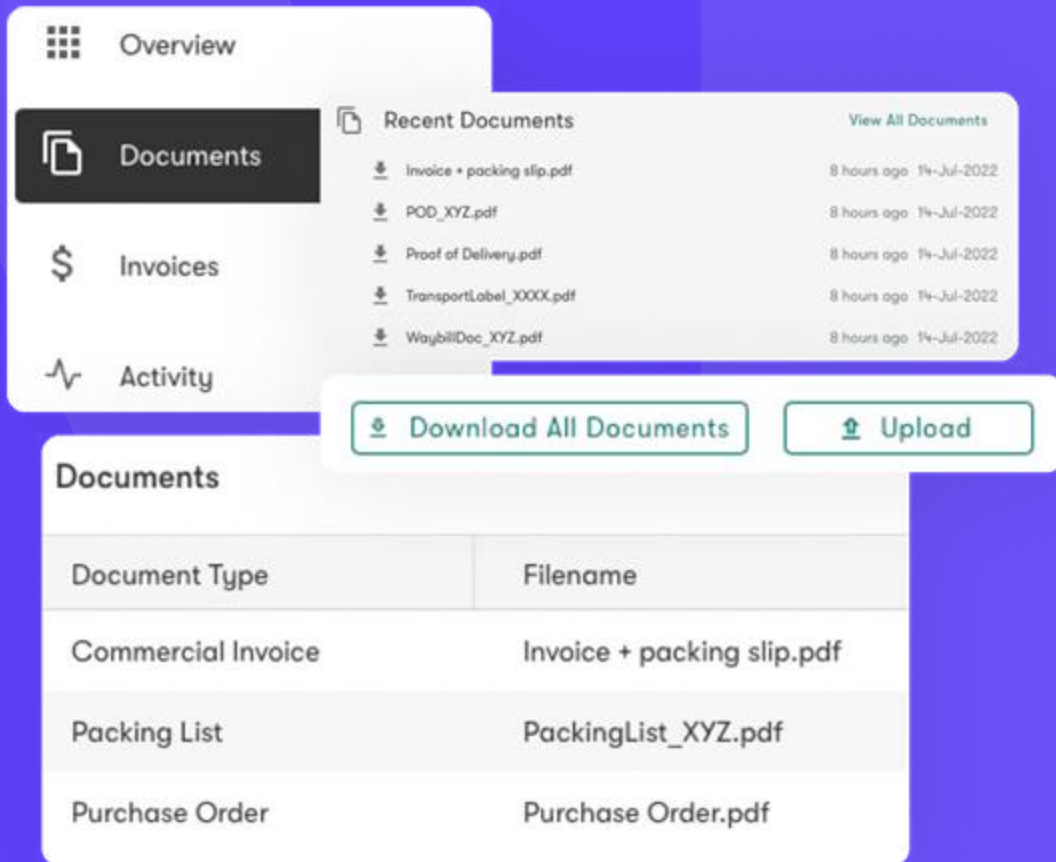
☐ Empty container not returned on time

# Documents Centralised

No inbox scouring. No version control.

Upload, store, download and quickly access all documents related to any shipment from within the system. A single storage location, enabling transition to fully digital documentation processes and enjoy the environmental benefits that come with it.

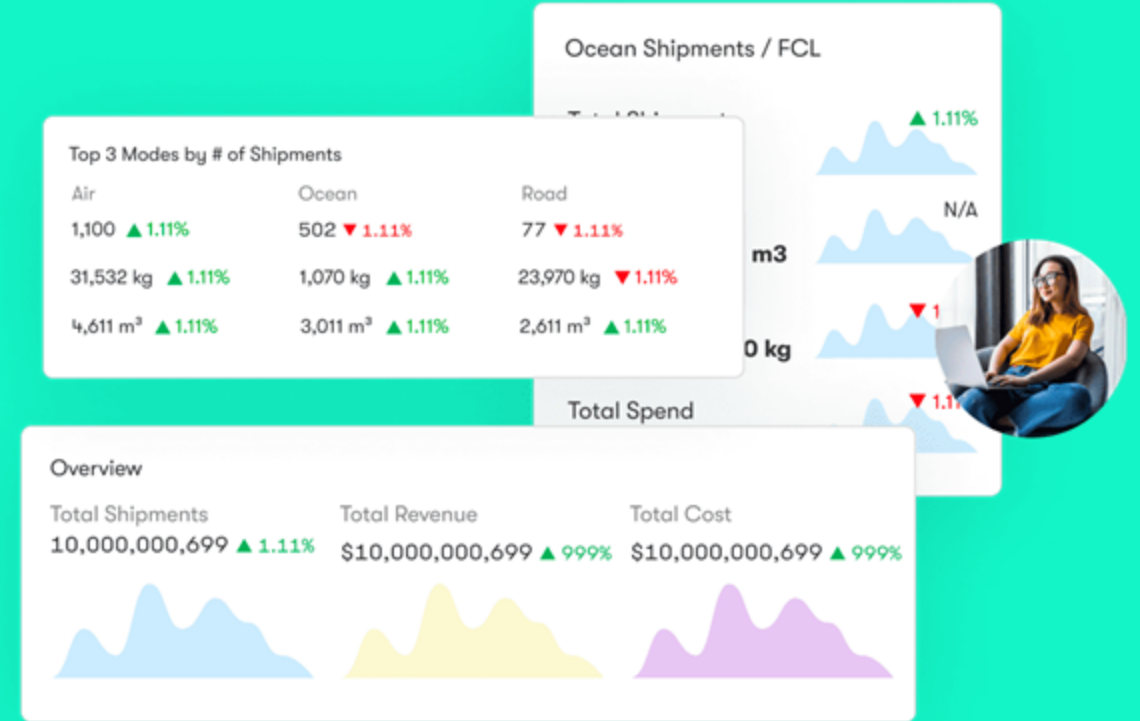
Security measures ensure compliance with the UK's Electronic Trade Documents Act 2023.



# Analytics and Insights

Analyse and optimise your supply chain with new, easy-to-use reporting. Vital cost and time information is automatically logged, allowing you to make data-driven improvements to your logistics.

Providing complete control of your KPI and SLA reporting. Move away from best-guess decision making and take cost saving action based on your real supply chain data.







### Inventory

Last Updated: 12 - Apr - 2023, 10:23pm

SummaryDetails

Create Order

200 of 1600 Inventory results

Warehouse	Product	Description	Available
San Francisco Warehouse #123-AB	Dog Collars	Red, white and blue, S/M/L sizes	200
NYC FIDI Pier 17	Cat bowls, leashes, toys and feeding equipment	SKU #123456, 34x567, 456789, 789012	100
Sao Paulo Warehouse	Pig ears, hooves, bully sticks	--	50
Bombay Pier 10	Flea and tick medicines	Needs refrigeration or climate control	25
San Francisco Warehouse #654-2A	Bacon and peanut butter ice cream	Freezer storage required	150
NYC FIDI Pier 21	Cat bowls, leashes, toys and feeding equipment	SKU #123456, 34x567, 456789, 789012	100
Guangzhou WH #32345	Raw food, lamb and beef	Freezer storage required	75
Qingdao WH #445A6C	Cat collars and leashes	Pink, white and blue, S/M/L sizes	120
Singapore Shen Zen 4509	Cat toys	Catnip mice, springs, and jingly balls	30

Receipt #12345

Finalized

DetailsDocumentsOther Products

Other products in this receipt:

Dog Collars

Quantity: 24

Red, white and blue, S/M/L sizes

Flea and tick medicines

Quantity: 55

Needs refrigeration or climate control

Cat bowls, leashes, toys and feeding equipment

Quantity: 16

Raw food, lamb and beef

Freezer storage required

Cat collars and leashes

Pink, white and blue, S/M/L sizes

Catnip mice, springs, and jingly balls

Product Name

This is the description for the product

View HistoryOrder

1200 Units

Received Over 30 days

200 Units

Shipped Over 30 days

100 Available

In Warehouse

Receipts in the last 7 days

Orders in the last 7 days

10 - Mar - 2023

Total Receipts: 10 Total Units: 1200

+

09 - Mar - 2023

Total Receipts: 10 Total Units: 1200

+

08 - Mar - 2023

Total Receipts: 10 Total Units: 1200

+

06 - Mar - 2023

Total Receipts: 10 Total Units: 1200

+

10 - Mar - 2023

Total Orders: 10 Total Units: 1200

+

09 - Mar - 2023

Total Orders: 10 Total Units: 1200

+

07 - Mar - 2023

Total Orders: 10 Total Units: 1200

+

# Advanced Inventory Management

With our in-platform warehousing management, you have enhanced visibility into your warehousing inventory.

Create outbound warehouse orders, track inbound receipts, view real-time inventory status, recent activity and historical data.

All information related to your storage, available in one place and managed within the platform.

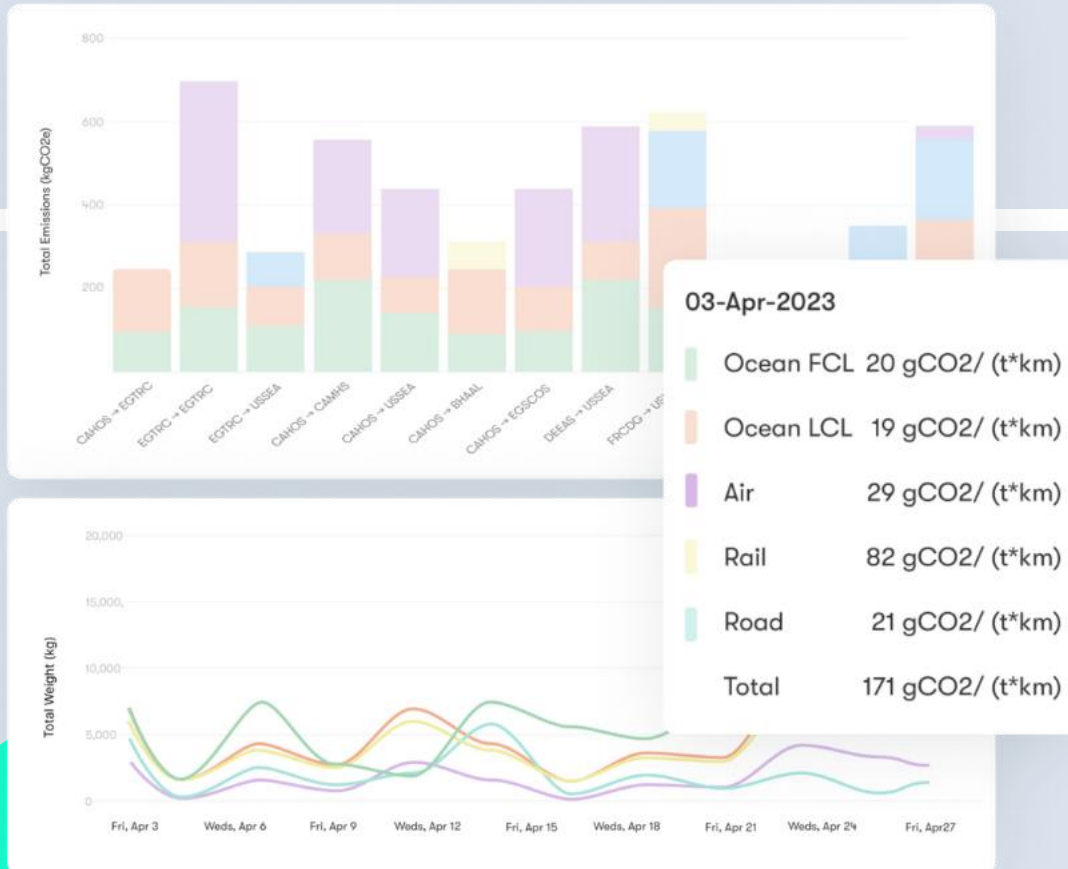
# ISO Compliant CO2 Emission Tracking

Monitor and improve the sustainability of your supply chain with our carbon emission tracking. Track progress on ESG in granular detail. Present this progress to customers as a competitive advantage.

Our system is audited and accredited by Smart Freight Centre, follows the GLEC Framework and compliant with ISO 14083.

## How does it work?

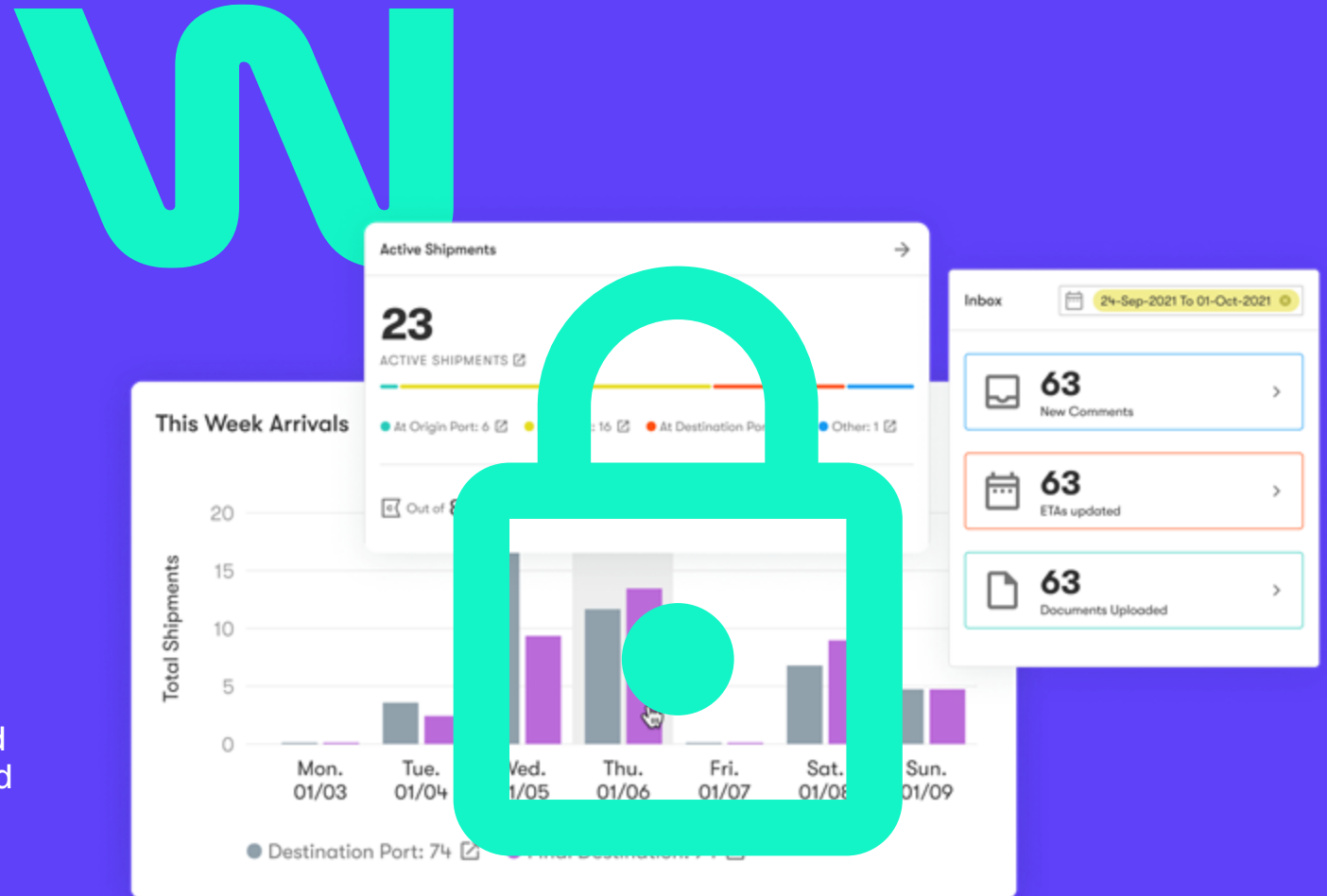
Calculations are based on the shipment information in the tool (transport mode, weight, distance) and will cover all available legs within a shipment.

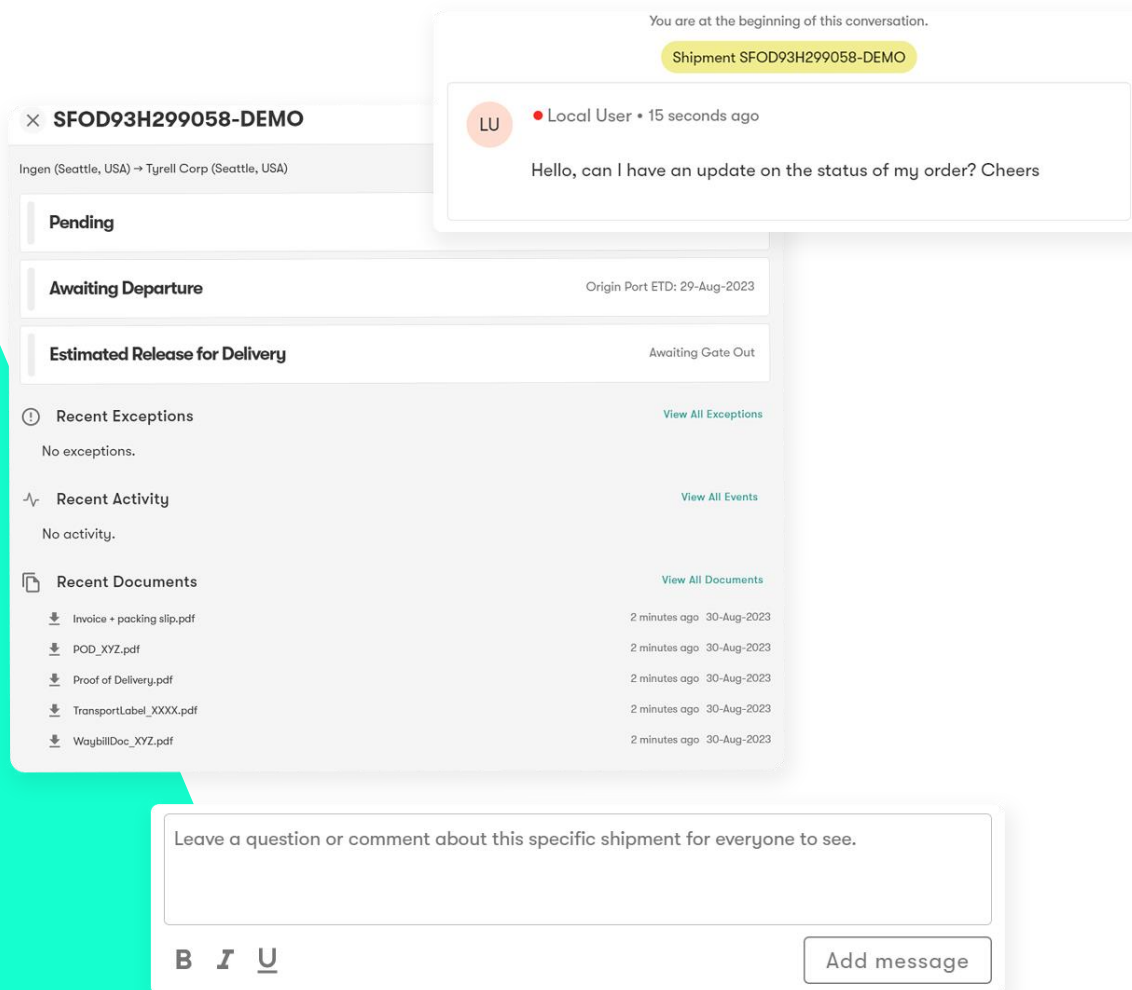


# Serious about security

Our GDPR compliant system is subject to regular penetration and vulnerability testing, having achieved SOC2 Type 2 Certification in 2023.

Your data is protected via encryption during transmission and at-rest with industry standard protocols and methods. Meanwhile, established incident management and disaster recovery procedures are in place.





# Transform stakeholder communication

Communicate directly with our experts from within the tool using live chat. Read all vital shipment information on a single tab.

Pairing this with our notification settings and you'll never miss a development.



# Learn more about The WTA Platform...

## Dashboard Tab

A top-level summary of your supply chain. Offers easy navigation to more specialised areas of the tool. Prompts you if any shipments need your attention.

## Bookings Tab

Book a shipment from within the portal or request a quote from WTA. See status updates on booking requests already submitted in the tool.

## Shipments Tab

An overview of all your shipments and/or containers in a simple table view. Filter through them on any data point. View their live location on a world map.

## Analytics Tab

Breathtaking supply chain data at your fingertips. Volumes, costs, weights, average transit times, CO2 tracking, popular routes and much more, all collected automatically.

## Accounting Tab

All financial information related to your supply chain. Filter through invoices, calculate total due, deep dive into any accounting information.

# Set-up FAQs



## Does it work across every transport mode?

Yes.

## Does it cost?

The WTA Platform comes as standard for everyone who uses WTA. All customers can access the tool once they have been setup.

## How do I get started?

Speak to your dedicated account manager at WTA and they will complete the setup process.

## How long does the setup process take?

Setup is an extremely simple process, which only requires email registration and verification from us. Easier than signing up for Facebook. From there, we can assist with staff training.

## Who do I ask for assistance?

All our team at WTA are trained on The Platform. Your dedicated account manager should be able to handle any queries.

For more complicated enquiries, they will be able to seek assistance from our dedicated IT team to answer your question.




# A winning combination



The **WTA Platform** is a vital step in our continued innovation. Bringing our expertise and exceptional customer service together with an industry-leading visibility tool.

With this combination, you have the tools for building an exceptional supply chain. One which works as a genuine competitive advantage and is perfectly suited to your business needs.

Excellent 

Rated 4.7 out of 5 on  Trustpilot



# Contact us.

Phone      0800 016 3933  
Email      [hello@wtagroup.com](mailto:hello@wtagroup.com)  
Website    [www.wtagroup.com](http://www.wtagroup.com)